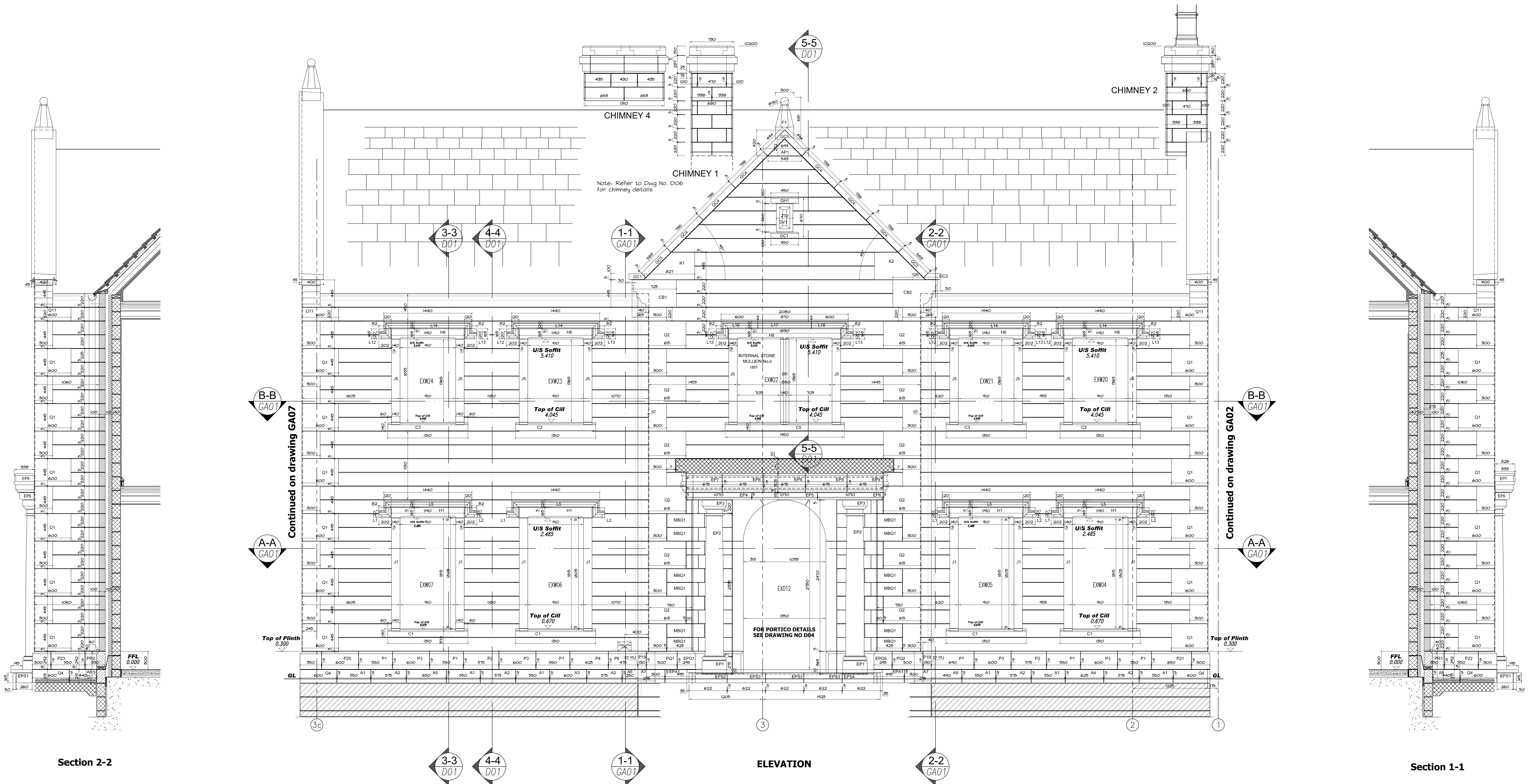
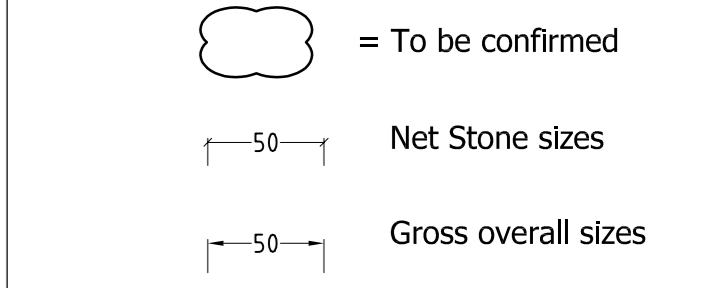


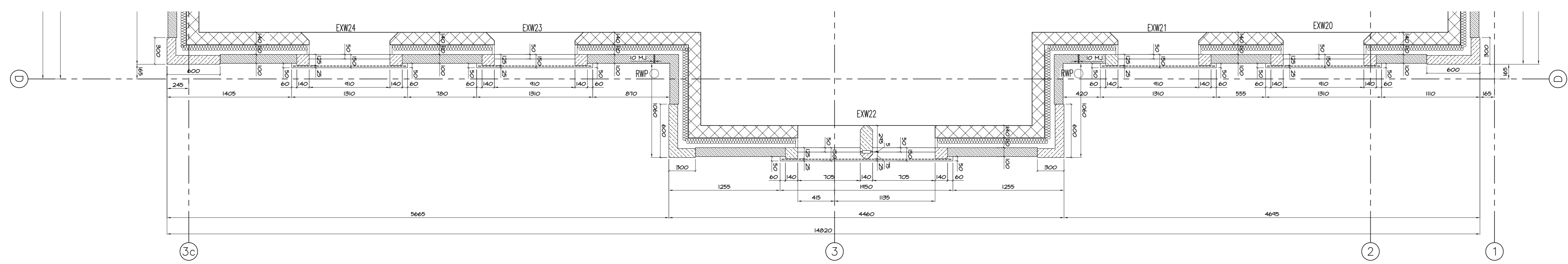
Notes.
 These drawings have been prepared in accordance with BS298 1994 Design & Installation of Natural Stone Cladding and Lining.
 COM REGULATIONS DESIGN RISK ASSESSMENT
 The size and shape of individual stones for this project have been designed to satisfy the overall design requirements for the building.
 All persons handling and installing such stones should be aware that there are risks associated with this type of work, which cannot be designed out.
 Risk: Injury
 Risk Reduction:
 Fixers must be suitably experienced in the handling of stones and employ lifting methods appropriate to the size and shape of the stone.
 Access and working platforms must be to the standard required by current legislation.
 Reference must always be made to COSHH information for the materials being used.



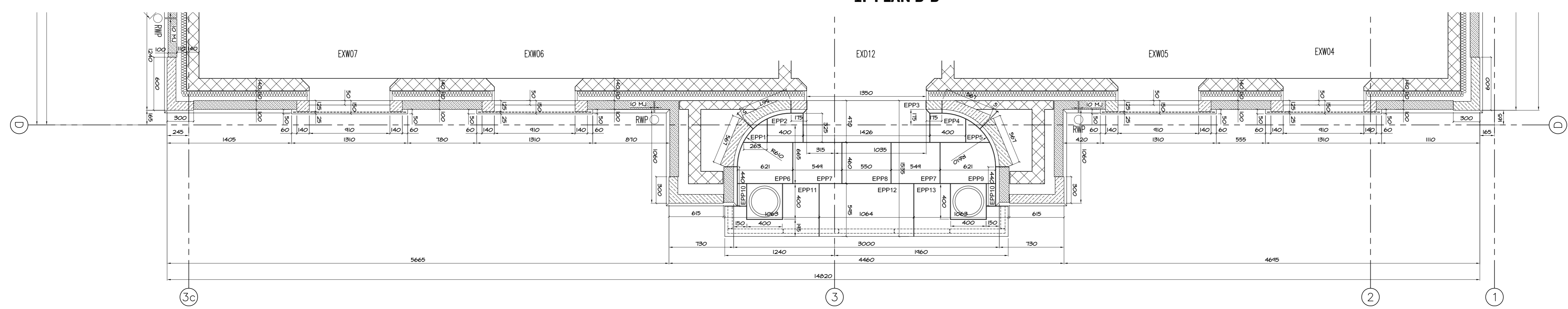
Section 2-2

Section 1-1

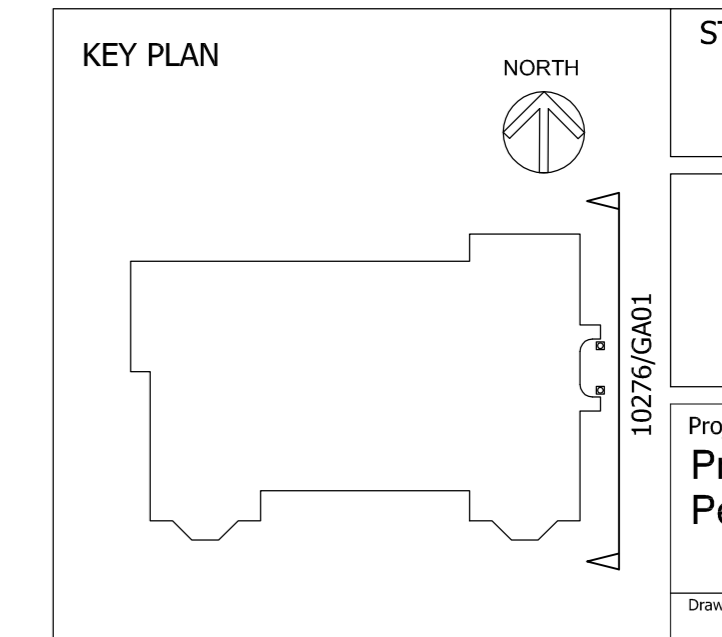
ELEVATION



1F PLAN B-B



GF PLAN A-A



Rev.	Date	Comments	By
F	27.01.11	Braunched walling stone numbers added to Portico	AGM
E	22.12.10	Chimney details added.	AGM
D	29.09.10	Portico stone key mark numbers added. Updated to comments and re-issued.	AGM
C	15.09.10	Scale changed to 1:25	IR
B	8.09.10	1st Floor windows lowered & stone Nos added.	IR
A	23.08.10	Label stone type numbers changed. Revised to Architects comments.	AGM

STATUS:
FOR CONSTRUCTION

STONE CONNECTION
 11 Bypass Park Estate
 Sherburn in Elmet
 Leeds LS25 6EP
 TEL: 01977 686480 FAX: 01977 681439

Project: Private Residence
 Drawing Title: General Arrangement East Elevation