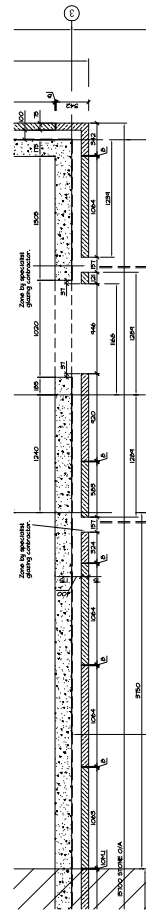


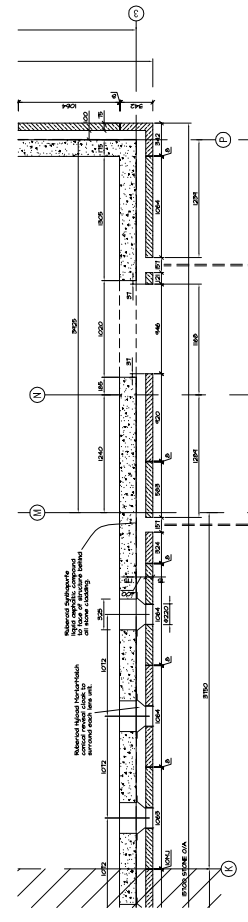
Continued on GA03

Continued on GA03

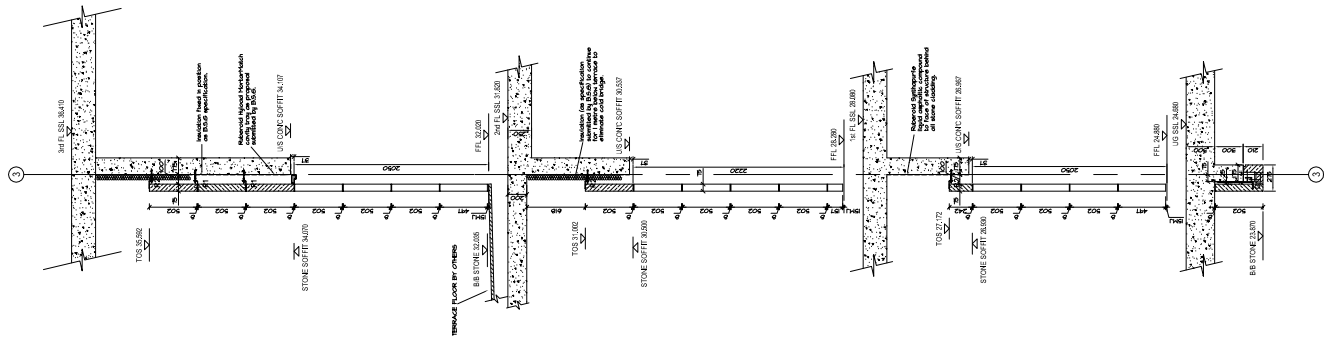
ELEVATION



PLAN A-A



PLAN B-B



SECTION 2-2

JOINTING: cube to be stack bonded ashlar with 25mm lime mortar beds & joints recessed to a depth of 10mm.

SHIMMING TO FIXINGS: maximum shim dimension 15mm, maximum number of shimming plates 4.

= TO BE CONFIRMED

| Rev. | Date. | Comments. |
|------|----------|---|
| D | 10/08/02 | Height of top course at 3rd floor amended & general update. |
| C | 17/12/01 | Fixings Updated. |
| B | 22/10/01 | Updated to Architects comments, fixings updated & stone numbers added. |
| A | 07/09/01 | Updated to Architects comments, proposed fixings & movement joints added. |

| | | | |
|------------------------|---|--|---|
| <p>Key Plan</p> | <p>Client Title: The Bath Spa Project</p> <p>Architect: Nicholas Grimshaw & Partners Ltd</p> <p>Client: The Bath Stone Group</p> | <p>steward design (uk) limited 3 dardson court, park street, chebury, dillingham, somerset, uk. CVK 3PT td: +44 (0) 1658 811500 fax: +44 (0) 1658 811700 e-mail: design@stewarddesign.co.uk website: www.stewarddesign.co.uk</p> <p>Project Title: Cube - Part South Elevation Grids K to P</p> <p>Architect: Nicholas Grimshaw & Partners Ltd</p> <p>Client: The Bath Stone Group</p> | <p>Scale: 1:50 @ A0</p> <p>Date: June 2001</p> <p>Author: T. Abbott</p> <p>Project No.: GA04</p> <p>Rev. D</p> |
|------------------------|---|--|---|