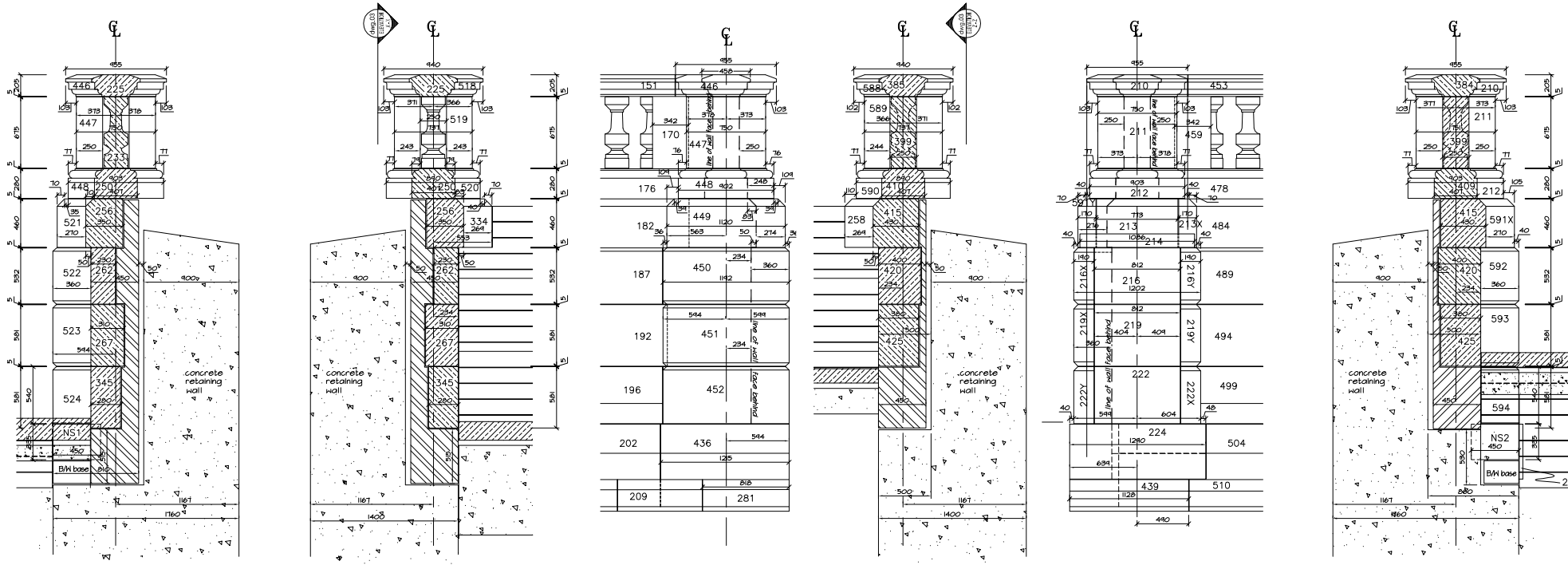


☁ = TO BE CONFIRMED
 ○ = REVISED DETAIL
 500 Net Stone sizes
 Gross overall sizes (CL of joint to CL of joint at end of stone)



Section 2 - 2

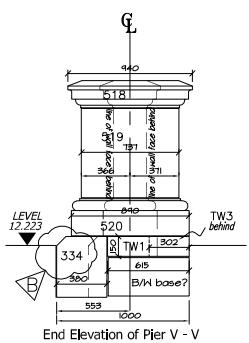
Section 1 - 1

Front Elevation of Pier (LH side of steps)

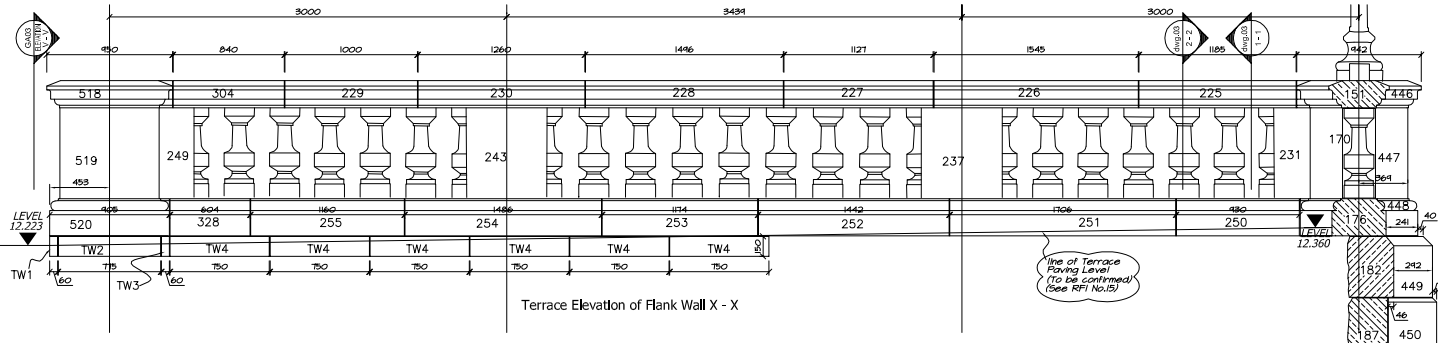
Section 4 - 4

Front Elevation of Pier (RH side of steps)

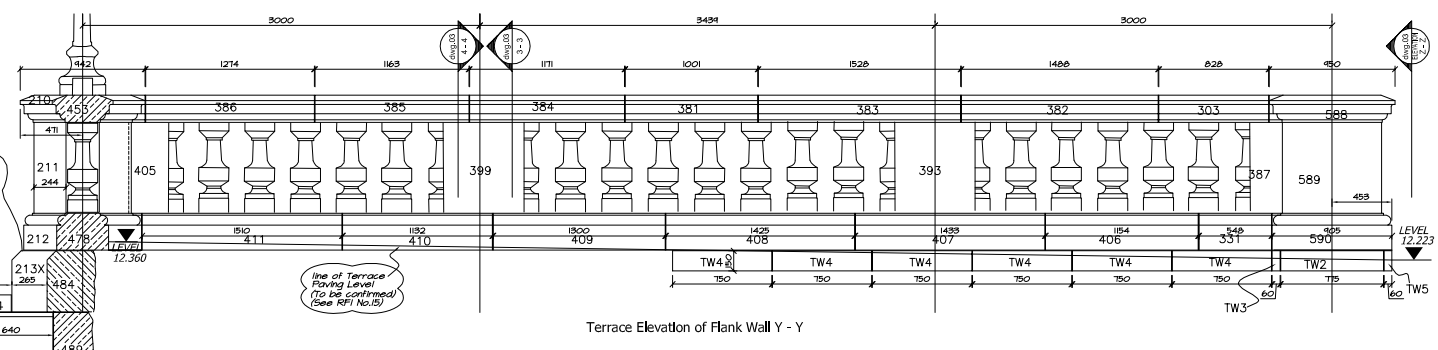
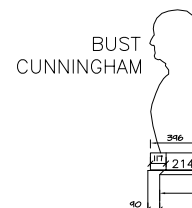
Section 3 - 3



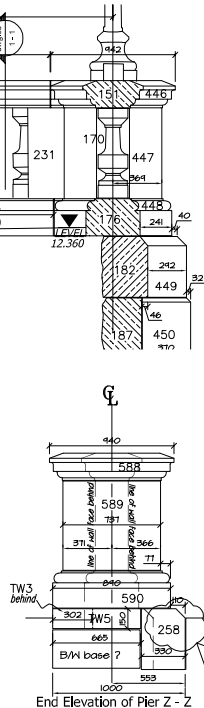
End Elevation of Pier V - V



Terrace Elevation of Flank Wall X - X



Terrace Elevation of Flank Wall Y - Y



End Elevation of Pier Z - Z

A 03.03.04 Terrace Elevations added. Section 4 - 4 added.

Rev.	Date.	Comments.

STONEWEST LTD
 Lamberth's Place,
 St James's Road,
 Clonville, CRO 2HX
 TEL: 020 8684 6646 FAX: 020 8684 9323

DRAWN BY
stewart design (uk) limited
 3 clarendon court, park street, charbury, shropshire, shropshire, UK, DY7 3PT
 tel: +44 (0) 1568 811500 fax: +44 (0) 1568 811700
 email: design@stowedesign.co.uk website: www.stowedesign.co.uk

Contract Title: World Squares for All Phase 1	Drawing Title: Flank Wall Sections	Scale: 1:20
Date: 18/11/02	Drawn by: JPS	Checked by: GA03
		Rev A